

**TSPAN6 Antibody (C-term)**  
**Affinity Purified Rabbit Polyclonal Antibody (Pab)**  
**Catalog # AP9224b**

**Specification**

---

**TSPAN6 Antibody (C-term) - Product Information**

Application	WB, FC,E
Primary Accession	<a href="#">O43657</a>
Reactivity	Human, Mouse
Host	Rabbit
Clonality	Polyclonal
Isotype	Rabbit IgG
Antigen Region	176-205

**TSPAN6 Antibody (C-term) - Additional Information**

**Gene ID** 7105

**Other Names**

Tetraspanin-6, Tspan-6, A15 homolog, Putative NF-kappa-B-activating protein 321, T245 protein, Tetraspanin TM4-D, Transmembrane 4 superfamily member 6, TSPAN6, TM4SF6

**Target/Specificity**

This TSPAN6 antibody is generated from rabbits immunized with a KLH conjugated synthetic peptide between 176~205 amino acids from the C-terminal region of human TSPAN6.

**Dilution**

WB~~1:1000  
FC~~1:10~50  
E~~Use at an assay dependent concentration.

**Format**

Purified polyclonal antibody supplied in PBS with 0.09% (W/V) sodium azide. This antibody is purified through a protein A column, followed by peptide affinity purification.

**Storage**

Maintain refrigerated at 2-8°C for up to 2 weeks. For long term storage store at -20°C in small aliquots to prevent freeze-thaw cycles.

**Precautions**

TSPAN6 Antibody (C-term) is for research use only and not for use in diagnostic or therapeutic procedures.

**TSPAN6 Antibody (C-term) - Protein Information**

**Name** TSPAN6

**Synonyms** TM4SF6

## Cellular Location

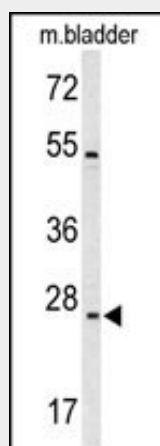
Membrane; Multi-pass membrane protein.

## TSPAN6 Antibody (C-term) - Protocols

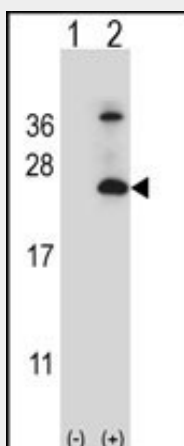
Provided below are standard protocols that you may find useful for product applications.

- [Western Blot](#)
- [Blocking Peptides](#)
- [Dot Blot](#)
- [Immunohistochemistry](#)
- [Immunofluorescence](#)
- [Immunoprecipitation](#)
- [Flow Cytometry](#)
- [Cell Culture](#)

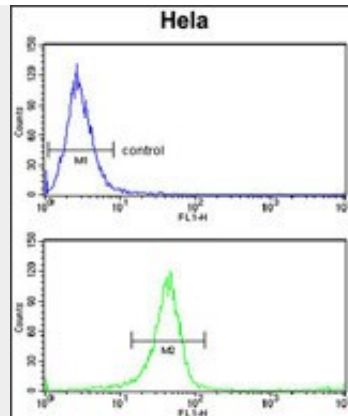
## TSPAN6 Antibody (C-term) - Images



Western blot analysis of TSPAN6 Antibody (C-term) (Cat. #AP9224b) in mouse bladder tissue lysates (35ug/lane). TSPAN6 (arrow) was detected using the purified Pab.



Western blot analysis of TSPAN6 (arrow) using rabbit polyclonal TSPAN6 Antibody (C-term) (Cat. #AP9224b). 293 cell lysates (2 ug/lane) either nontransfected (Lane 1) or transiently transfected (Lane 2) with the TSPAN6 gene.



TSPAN6 Antibody (C-term) (Cat. #AP9224b) flow cytometry analysis of HeLa cells (bottom histogram) compared to a negative control cell (top histogram). FITC-conjugated goat-anti-rabbit secondary antibodies were used for the analysis.

### **TSPAN6 Antibody (C-term) - Background**

The protein is a member of the transmembrane 4 superfamily, also known as the tetraspanin family. Most of these members are cell-surface proteins that are characterized by the presence of four hydrophobic domains. The proteins mediate signal transduction events that play a role in the regulation of cell development, activation, growth and motility. This encoded protein is a cell surface glycoprotein and is highly similar in sequence to the transmembrane 4 superfamily member 2.

### **TSPAN6 Antibody (C-term) - References**

Ross, M.T., et al., Nature 434 (7031), 325-337 (2005)  
Clark, H.F., et al., Genome Res. 13 (10), 2265-2270 (2003)

### **TSPAN6 Antibody (C-term) - Citations**

- [Tspan6 stimulates the chemoattractive potential of breast cancer cells for B cells in an EV- and LXR-dependent manner.](#)
- [Click Chemistry-mediated Biotinylation Reveals a Function for the Protease BACE1 in Modulating the Neuronal Surface Glycoproteome.](#)
- [Tetraspanin 6: a pivotal protein of the multiple vesicular body determining exosome release and lysosomal degradation of amyloid precursor protein fragments.](#)
- [Tetraspanin 6: A novel regulator of hippocampal synaptic transmission and long term plasticity.](#)